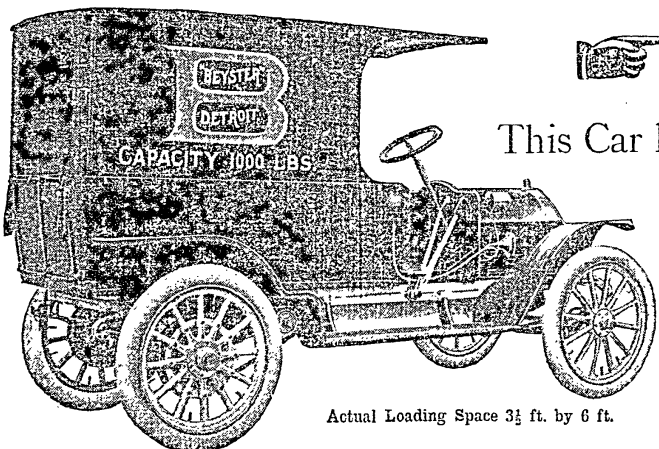


# The Commercial Car of Today, Tomorrow <sup>and</sup> For Years!



Actual Loading Space 3½ ft. by 6 ft.

**The Only Practical Light Motor Delivery Car Adapted For Duluth Hills**

This Car has been tested on Lake Avenue from Superior Street to the Boulevard Drive, and is in practical use now by the I. Freimuth Department store, where it is doing the work of three single delivery wagons.

*4-Cylinder Water Cooled 22 Horse Power--36-in. Wheel, 3-inch "Swinehart" Solid Truck Tires, Guaranteed for 10,000 Miles.*

## BEYSTER MOTOR DELIVERY CAR---Detroit, Mich.

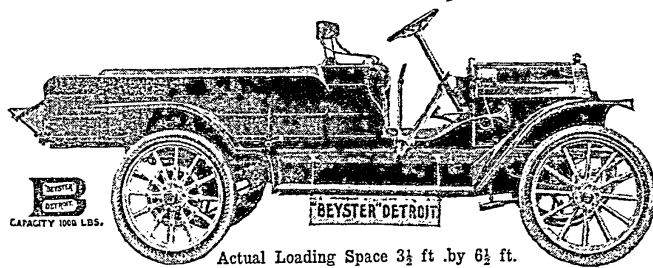
The Beyster-Detroit car has the simplest possible control, which saves time and decreases the chances of accident. Any boy can learn to drive our car in a short time and it is almost impossible for him to injure it. The absence of control levers on the steering post removes the possibility of confusion to the inexperienced driver, as well as the opportunity for harm to the car through thoughtlessness. In trying situations where slow speed and reverse are needed, the driver has both hands free to control the steering-wheel.

**Immediate Deliveries---Demonstrations Solicited**

**L. HAMMEL COMPANY, Agents**

**DULUTH,**

**MINNESOTA**



Actual Loading Space 3½ ft. by 6½ ft.

**S. H. MARSHALL, Manager Automobile Dept.**

NOTE--Our One-Ton Truck of 30-Horse-Power, four-Cylinder, Water-Cooled, will be ready for Demonstration in a few weeks.